

Future Land Use and Character

City of Paducah and McCracken County, KY

Adopted by City of Paducah 01/28/25
 Adopted by McCracken County 02/17/25



Legend

- Parcel Boundary
- Paducah City Limits
- McCracken County Boundary

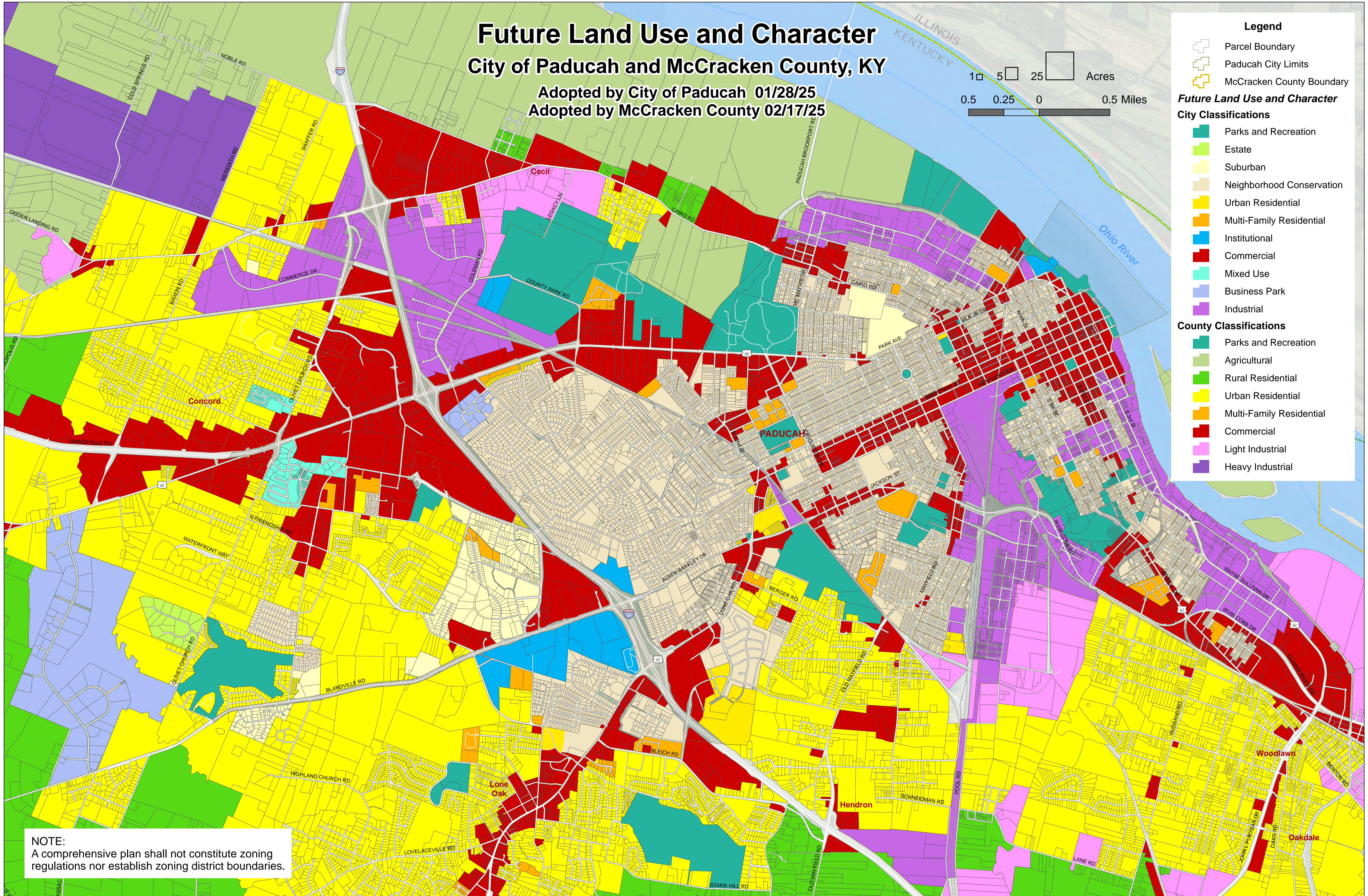
Future Land Use and Character

City Classifications

- Parks and Recreation
- Estate
- Suburban
- Neighborhood Conservation
- Urban Residential
- Multi-Family Residential
- Institutional
- Commercial
- Mixed Use
- Business Park
- Industrial

County Classifications

- Parks and Recreation
- Agricultural
- Rural Residential
- Urban Residential
- Multi-Family Residential
- Commercial
- Light Industrial
- Heavy Industrial



NOTE:
 A comprehensive plan shall not constitute zoning regulations nor establish zoning district boundaries.